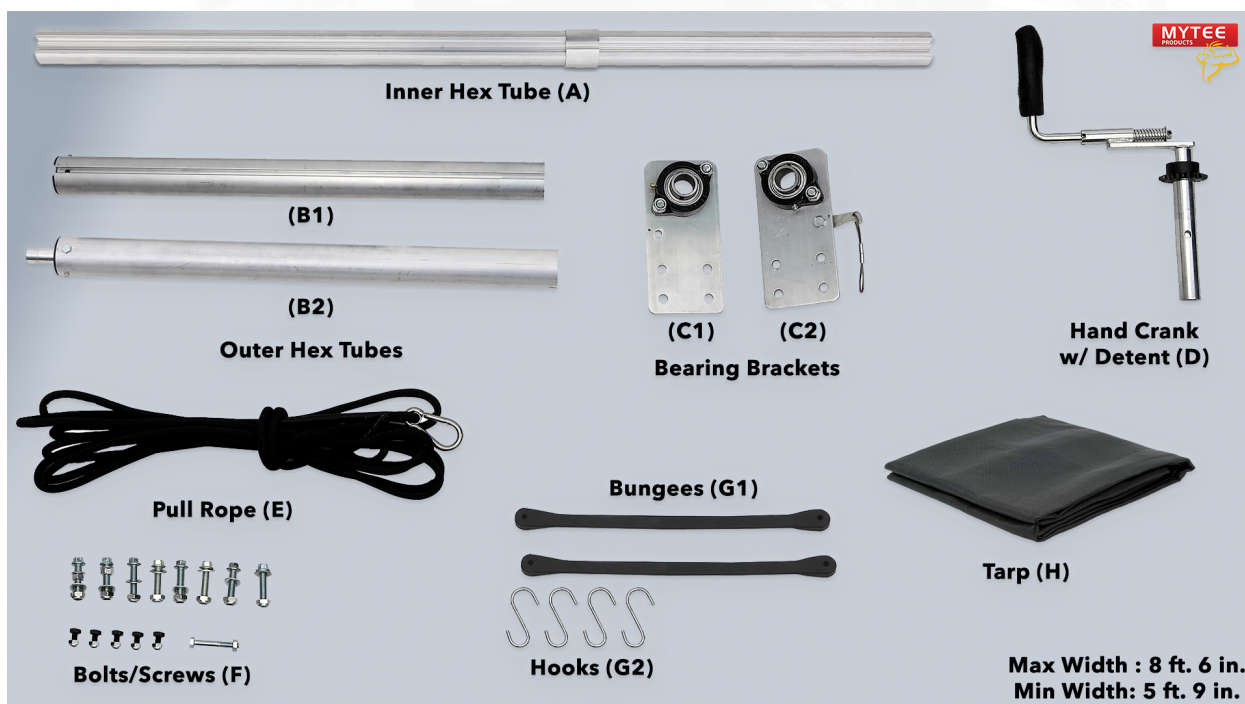
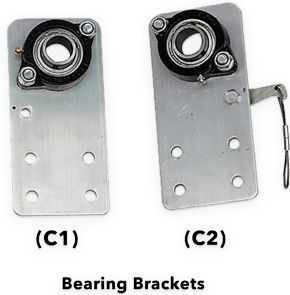




1335 S. Chillicothe Rd. Aurora, OH, 44202
www.myteeproducts.com
1-888-705-8277

DTR Series Dump Tarp Rolloff Kit Installation Guide





1. Figure out where you would like to place the tarp roller on your dump truck. We recommend mounting the roller outside of the dump body's load area as to prevent damage from loading the dump truck's body. You'll also want to place the roller where the winder is easily accessible.
2. Now that you determined where you want to place the tarp roller kit, clamp the bearing bracket **(C 1/2)** assemblies to your desired location. The bearing bracket with the detent lever **(C2)** should be placed on the driver's side. Ensure these brackets are aligned on each side vertically. Additionally, mount the brackets high enough to accommodate the entirety of the tarp when fully rolled up onto the roll bar.
3. To begin installing the brackets **(C1/C2)**, mark the the location of the bearing bracket's mounting holes on each side of the dump truck body. Now drill 13/32" holes into the four marked locations.
4. The holes have been drilled, now assemble the bearing brackets to the dump body using four 3/8-16x1 cap screws, nuts, and lock washers **(F)** that are supplied. However, avoid tightening the fasteners at this point, just tighten them with your hands to keep them in place.
5. Take out the inner hex tube **(A)** and mark the center of the tube's length with a pencil. Insert that tube just half way into the drivers side roll tube **(B1)**. On the passenger, insert the other side of the roll tube **(B2)** onto the opposite end of the inner hex tube **(A)**. Now, measure the distance between the inside of the mounted bearing brackets **(C1/C2)**. If the measurement is less than 81.75" both roll tube assemblies must be shortened by equal amounts. Separate the two roll tubes as to ensure the length of the complete roll tube assembly is 1/4" (from adaptor to adaptor) less than the distance between mounting brackets. Reference your pencil marking to verify the inner hex tube **(A)** is centered inside the outer roll tube assembly **(B1/B2)**. If it is centered, screw each roll tube assembly to the inner hex tube using a 1/4" x 1" self drilling and taping screw 2" **(F)** from the end of the outer tube.



Tarp (H)

6. Slide the entirety of the roll tube **(A/B)** into the 5" loop in the tarp **(H)**. Ensure the webbing on the seams of the tarp will rest on the bottom of the tarp when installed. The roll tube end of the tarp has only one row of webbing reinforcement.
7. Ensure the roll tube **(A/B)** is centered within the tarp **(H)**. Tightly hold the roll tube in the end of the pocket, and screw in place using 1/4" x 1" seed drilling tapping screws **(F)** and fender washers. Space them evenly and centered across the roll tube. Ensure the screws are at least 2" from the ends of the roll tube. Also do not screw into the shaft adapters on each end.
8. Remove either one of the bearing brackets **(C)** and slide the tarp roll into the remaining bracket. Now that the tarp roll is placed, reposition the the bearing bracket and reassemble it to the dump body. Afterwards, tighten the 3/8" bracket mounting bolts.
9. Center your tarp roll **(A/B)** between each mounting bracket **(C)** and tighten set screws into each bearing race.



**Hand Crank
w/ Detent (D)**

10. Take the sprocket and assemble it onto the 1" shaft on the drivers side of the roll tube assembly. Ensure the detent lever **(D)** is in the open position, slide the sprocket down the shaft until it's tight against the bearing.
11. Now use the 1/4" x 2" screw and lock nut that is provided to assemble the crank handle **(D)** onto the driver's side of the roll tube shaft **(A/B)**.



Bungees (G1)



Hooks (G2)

12. Attach the four included S-Hooks **(G2)** to the two tarp straps **(G1)**. Take the small end of the hook and insert it into the small hole in the strap. You should crimp the end of the hook so it stays securely placed on the bungee strap **(G1)** The two small hooks on the straps should be attached to the rear corner holes on the tarp. Now crimp the large hooks **(G2)** around the tarp grommets **(H)**. The straps are now securely attached to the tarp.



Pull Rope (E)

13. Take your included pull rope **(E)** and attach it to the center grommet on the rear of the tarp **(H)**.
14. Attach the two rope storage hooks to the dump body. These hooks are to store the pull rope **(E)** while the tarp **(H)** is covering the dump body. The hooks must be horizontally mounted and can be

bolted or welded onto the body. We recommend a distance of 15"-17" between the two hooks.

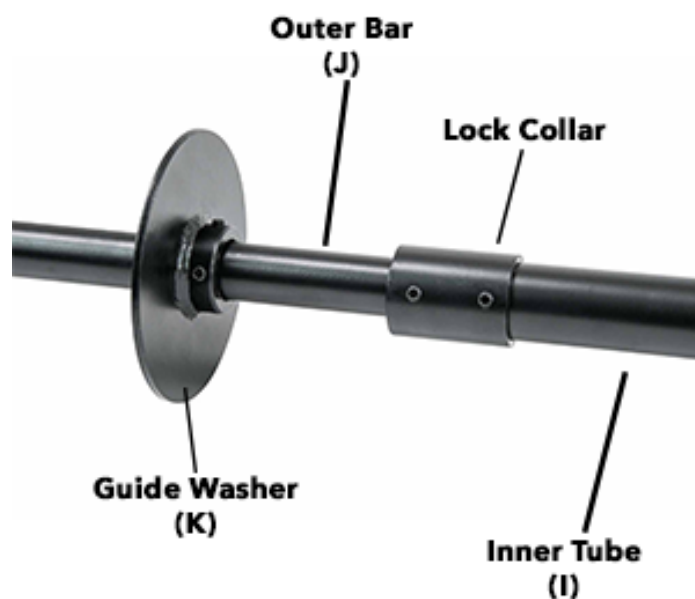
15. Now on the other side, assemble two more rope storage hooks to the side of the of the dump body near the crank handle (**D**). These hooks are for storing the pull rope (**E**) when the tarp is retracted and rolled up. These hooks must be placed vertically and can be bolted or welded on, similar to Step 14.





Optional Retention Bow Installation Guide

1. Attach the outer bars (**J**) to the center tube (**I**) using the two 5/16" x 1" roll pins that are supplied.
2. Now slide the rear bar (**I, J**) into the rear pocket on the dump body tarp (**H**). You'll want to ensure the bar is centered, with an equal amount of exposed bar on each side.



3. Take your lock collar, guide washer, PVC roller tube, and the second lock collar and assemble them, in that specific order, onto each end of the rear assembly.
4. Take a measurement of the inside width of the top of the dump truck or bed extension boards where the guide washers (**K**) will slide between. Tighten the lock collars so the guide washers are held 1/2" narrower than the body measurement. Ensure the PVC roller tubes can spin freely on the rear bar.
5. You can use the lock collars to adjust exactly how long you need your anti-retention sail to be to fit your dump truck. There is no need to cut any excess bar. The bar is fully extendable up to 96".

Fully extendable up to 96"

