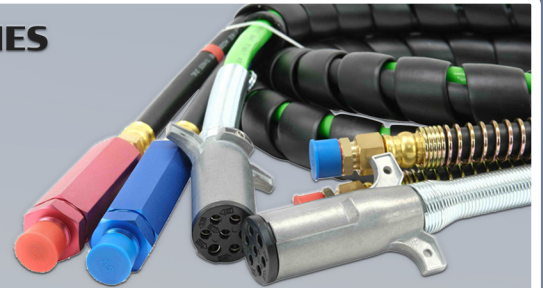




# COMMON ISSUES WITH 3-IN-ONE ABS AIR POWER LINES & HOW TO SOLVE THEM

## TROUBLESHOOTING YOUR 3-IN-ONE ABS AIR POWER LINES

3-In-One ABS Air Power Lines are an integral part of your truck. However, over time they can wear and break down, causing them to fail. These lines can be costly to replace, so we are going to offer some troubleshooting tips you can try to get your 3-in-One Line operational again.

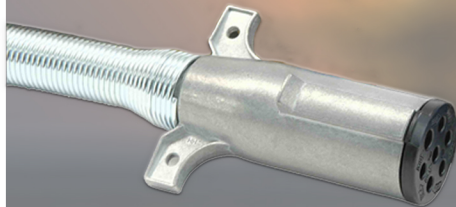


### MOST COMMON ISSUE:

The most common issue is a failure of the Electrical Power Line. The connector has Seven (7) connection lines that conduct electricity. If just one of the connectors become defective, the entire power chord will cease to function properly. Over time they can become loose due to wear and tear, road hazards, and even sharp turns.

## SOLVING THE POWER LINE FAILURE:

1. Remove the Connector Housing



2. Examine the wires and ensure they are properly in place.



3. Tighten screws to keep wiring in place and reinstall housing. Your power cable should have 7 good connections now and be functional.



## TIPS FOR PREVENTING DAMAGE:

To prevent wires becoming loose & disrupting the power connection, you should avoid yanking on the power chord when disconnecting it. Instead, hold the end terminal & properly disconnect. Proper disconnection will prevent power cable malfunctions & failure.

